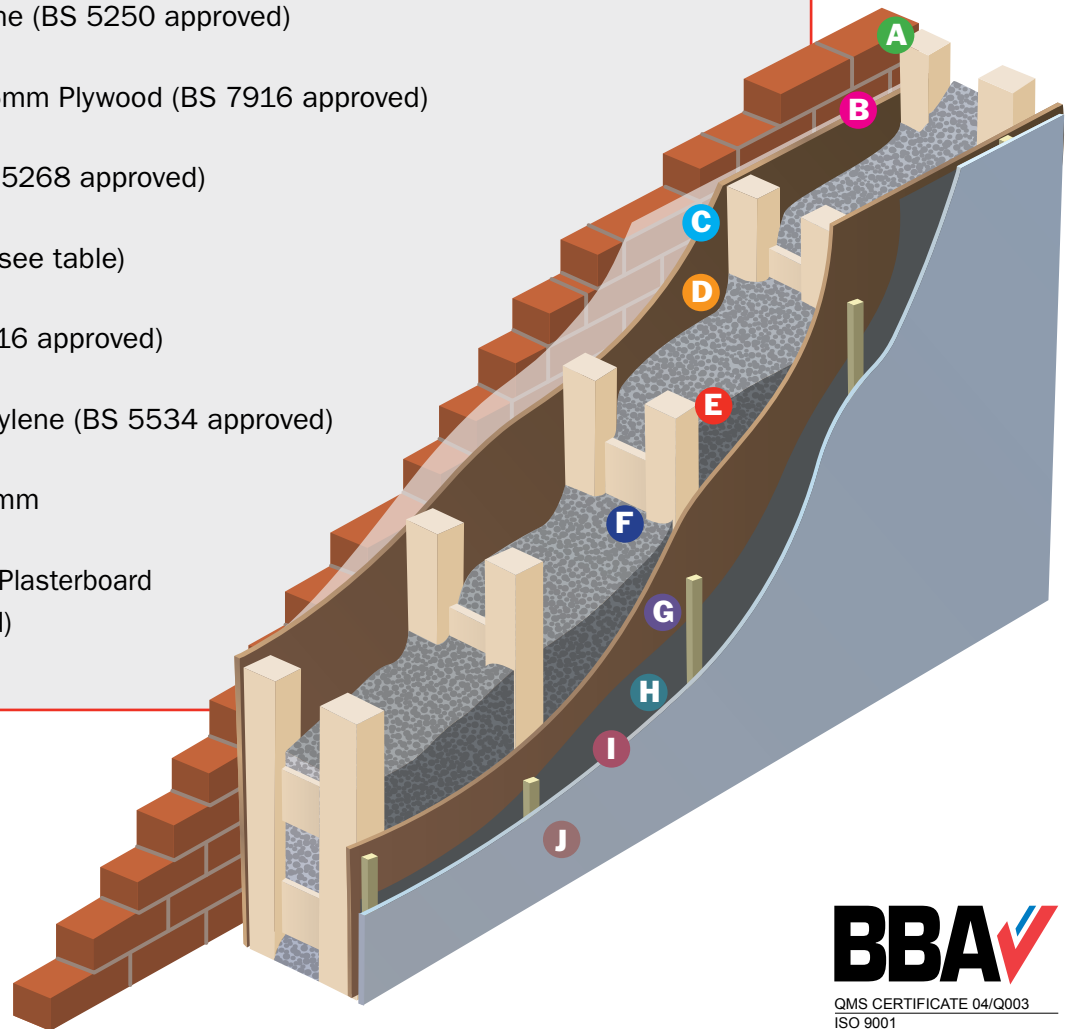


Ty Unnos Wall System

Calculation based on less than 50mm² of ventilation per linear m of brickwork

Panel Depth	'U' Value
188mm	0.21
200mm	0.20
205mm	0.19
215mm	0.18
230mm	0.17
245mm	0.16
260mm	0.15
275mm	0.14
295mm	0.13
320mm	0.12
350mm	0.11
385mm	0.10

- A** 102mm Brickwork
- B** 50mm Cavity *
- C** Breather Membrane (BS 5250 approved)
- D** 9mm OSB or 12.5mm Plywood (BS 7916 approved)
- E** Ladder Beam (BS 5268 approved)
- F** WARMCEL (depth see table)
- G** 9mm OSB (BS 7916 approved)
- H** 500 Gauge Polythylene (BS 5534 approved)
- I** Service Cavity 25mm
- J** 12.5mm Standard Plasterboard (BS 8212 approved)



BBA
QMS CERTIFICATE 04/Q003
ISO 9001

Excel Industries Limited

Maerdy Industrial Estate (South), Rhymney,
Gwent NP22 5PY United Kingdom
Telephone: +44 (0) 1685 845200 Fax: +44 (0) 1685 844106
Email: tech@excelfibre.com Web: www.excelfibre.com
Registered in England No.2072145

BBA
EMS CERTIFICATE 10/E004
ISO 14001

EXCEL
Fibre Technology

Excel Industries Limited reserves the right to amend product specifications without prior notice. The information given in this document is given in good faith and any recommendations for use should be verified as to suitability and compliance with actual requirements, specifications and applicable laws and regulations.